



# Making the case for citizen engagement

Marzia Mazzonetto, CEO, Stickydot srl

[marzia@stickydot.eu](mailto:marzia@stickydot.eu)

2 November 2021

# The public engagement I focus on



- “Multi-stakeholder engagement”, “co-creation”, “co-design” and other similar *buzzwords*
- Engaging citizens (and other types of societal actors) in participatory processes which lead to a concrete impact on research, innovation or related policies



# Benefits




- Beneficial to all fields of R&I (i.e. health, environmental sciences, SSH, etc.) and to all types of R&I (i.e from basic to applied research)
- Particularly useful at initial stages of R&I processes and governance
- Main contributions: identification of unforeseen impacts, higher transdisciplinarity, harnessing of collective intelligence, stronger contribution to the public good.



# Contexts



Some examples of societal engagement in R&I I've been involved in:

- A private company providing genetic testing services to hospitals, decides to better co-design its services by involving doctors and patients
  - A group of researchers working on alternative ingredients which could replace meat, wish to engage citizens in co-creation of new foods options
  - A group of citizens looking for ways to better assess the environmental impact of their lifestyle choices, reach out to researchers for support
  - A regional funding agency looking for ways to make the R&I it
- 



# TRANSFORM

TERRITORIES AS RESPONSIVE AND ACCOUNTABLE NETWORKS OF S3 THROUGH NEW FORMS OF OPEN AND RESPONSIBLE DECISION-MAKING



[www.transform-project.eu](http://www.transform-project.eu)



Science  
for Change



UNIVERSITAT DE  
BARCELONA



Finlombarda



Generalitat  
de Catalunya



innoviris  
.brussels  
we fund your future

# Citizen engagement in critical innovations in circular economy - Brussels

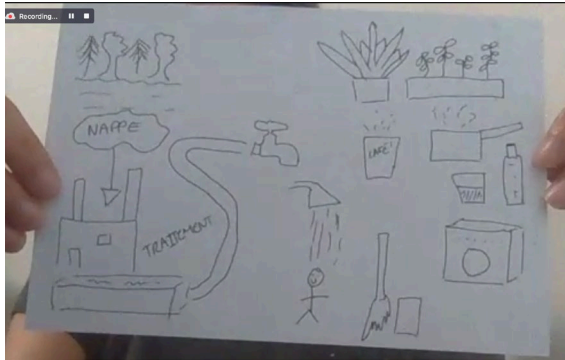
- Showcase how R&I in the region can be more strongly connected to community needs and potential societal impacts through multi-stakeholder engagement processes.
- Co-creation and citizen engagement are key to Brussels' economic transition, and addressed in specific R&I funding programmes
- Strong need to mainstream RRI elements into further R&I processes.



UCLouvain

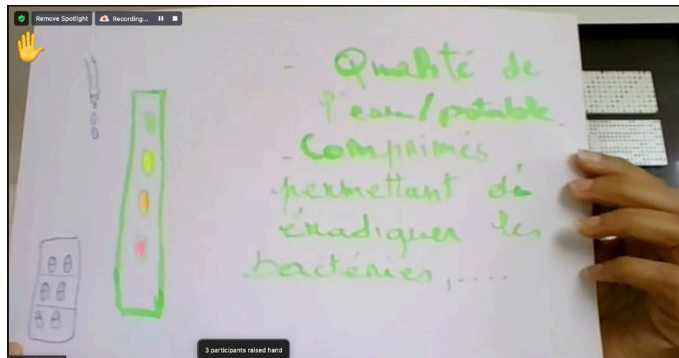


# Citizen engagement in critical innovations in circular economy - Brussels



**Pilot activities: bringing co-creation to "critical innovations"**

Citizen engagement is contributing to exploring potential uses and impacts of the innovation, harnessing collective intelligence and potentially leading to a more active role of the citizens in its uptake.



Agile process which supports innovators from academia, the private sector and civil society organisations to perform multi-stakeholder engagement.





# mosaic

Mission-Oriented Swafs to Advance  
Innovation through Co-creation

[www.mosaic -mission.eu](http://www.mosaic-mission.eu)



This project has received funding from the European Union's Horizon 2020 research and innovation programme under Grant Agreement No. 101006382 - H2020-Swafs-2018-2020 / H2020-Swafs-2020-1





# Supporting EU cities in involving citizens and communities in the definition of their Climate City Contracts towards climate neutrality in 2030



# Tips and tricks to assess and support societal engagement

- Methods strongly depend on topic, scale and funding available! There is no one-size fits all approach.
- Build upon the richness of what is already available (i.e. EU-funded SwafS projects)
- Meaningful engagement: “as a citizen, what is in there for me?”
- Concrete impacts: are key actors (researchers, public authorities) who can act upon suggestions, needs, ideas and trends co-designed and co-created with citizens really involved and committed to the process?

